



DESIGNER'S EYE

with SANJAY R. SINGHAL

io with golden color

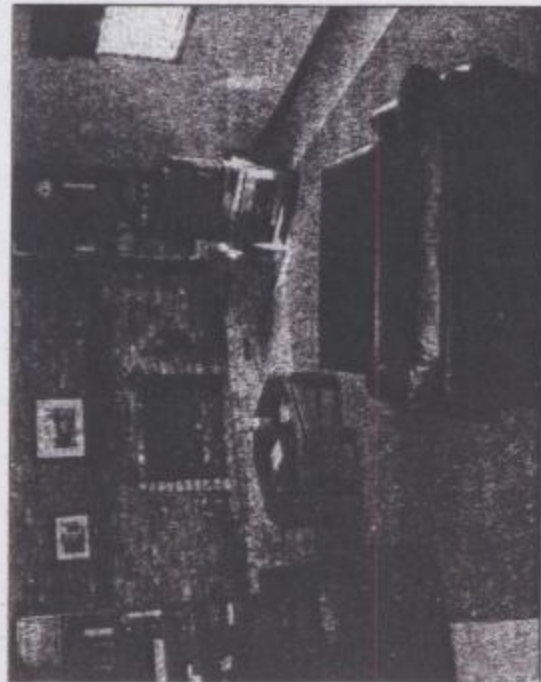
ear Designer's Eye,

We're a family of four, but most of the time we're empty-nesters. One daughter in college is home for a summer and holidays and our oldest daughter sits from her home in Atlanta.

We'd like to replace the 76-inch sofa with a love seat or armless chaise and replace the octagonal coffee table. The fireplace is a total wall of oak with an 18-inch hearth. The room is 19 feet long and 16 feet wide, and the ceilings are 92 inches. The kitchen overlooks the computers, a leather chair (which is a twin sleeper) and the ottoman are new. What other furniture pieces would you recommend and how should we arrange the space?

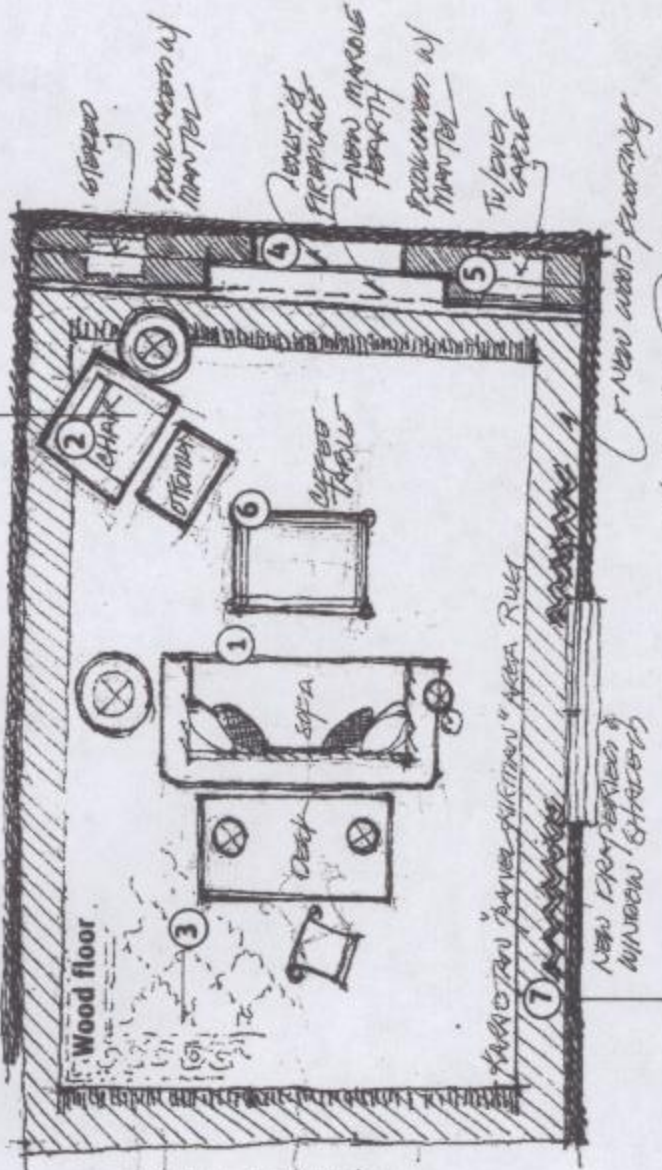
—Jane McGinn

PROBLEM



SOLUTION

Add wide chair and ottoman



Repaint the entire room with a warm golden yellow color.

Add simple window treatments to add warmth.

DESIGNER'S SUGGESTIONS: Full mantel with cabinets will emphasize room's width

Dear Jane,

My initial observations of the room: The room is very generously sized and does not feel cramped or confined. The fireplace wall is a terrific feature, and clearly the focus of the room. I wanted to ensure that the room remained comfortable, yet warm and inviting. Here are my recommendations and suggestions.

1. I suggest a new 94-inch sofa placed in front of the fireplace with its back to the kitchen. This can be upholstered in a heavy-duty woven deep gold chenille, but definitely not leather. Pile it high with lots of fun, decorative pillows, in various materials, colors and textures, including wonderful greens, yellows and deep earthen reds.

2. The newly purchased wide chair and ottoman should be placed at an angle in

the left-hand corner, facing into the room. These can also be piled high with pillows to coordinate with the sofa.

3. Repaint the entire room a warm golden yellow color to take advantage of the natural light from the window. Benjamin Moore #HC-4 "Hawthorne Yellow" would be a good choice for this room.

4. Remove the existing fireplace mantel shelf and flanking full-height bookcases. I suggest that the entire fireplace wall be re-faced with gypsum board, and painted to match the rest of the room. A new full-width mantel with flanking lower bookcase cabinets can then be placed on this wall to emphasize the width of the room and to balance the "long" feeling of this space.

5. Incorporate the television, DVD, cable into the bookcase with doors flanking

the fireplace. The TV can be mounted on an extending arm for viewing.

6. A large wooden coffee table can be placed between the sofa and the fireplace. I also suggest that a small table and lamp be placed next to the sofa and the wide chair; Ralph Lauren's New Bohemian End Table is an excellent choice, as is the Ralph Lauren Samovar Table Lamp in Polished Silver.

7. Last, create an intimate feel with very simple window treatments, consisting of honey-colored cellular shades in the windows, under simple drapery panels on a wrought-iron rod with ball-shaped finials. The drapery fabric should be a warm, vintage fabric.

Very truly yours,

Sanjay R. Singhal
www.professionaldesignservices.net

Send your design challenges

Feeling design challenged? The Sun-Times At Home section and the Merchandise Mart can help!

- Write some background on your living situation (25 words or less), live alone, family of 25 — you get the picture — the problem with your space and your vision of how you'd like that room to be used and how you'd like it to feel.
- Send four to six color photos,

digital preferred, to HomeLife@sun-times.com with Designer's Eye in the subject line.

- Include views of all sides of the room, including the floor, ceiling and four walls.
- Send us the overall measurements of the room.
- Name the room — is it your master bedroom, guest room, media room?

READY, SET, GO!

Send your quick-fix rooms for consideration by snail mail to Designer's Eye:

At Home c/o Laura Castro
Chicago Sun-Times
350 N. Orleans
Chicago 60654
or e-mail HomeLife@suntimes.com

—Sally Duros, Real Estate and At Home editor

At Home

CHICAGO SUN-TIMES

Reader Jane McGinn gets design help from designer Sanjay R. Singhal, and he advises to go for the gold (golden color, that is.) Designer's Eye, Page 3