



DESIGNER'S EYE
with DENISE ANTONUCCI
and JERRY SANFILIPPO

A spa-like look

*Dear Designer's Eye,
My husband and I have lived in our home for 10 years, and our master bedroom is still stark white. Everything we try seems underwhelming and we cannot figure out what colors would work well in this room. We would like the room to feel very warm and have a spa or hotel-like feel. Our master bedroom is approximately 18 by 16. Please help!!*

Gwen and Sat Chiovari
Glenview



PROBLEM

DESIGNERS' SUGGESTIONS: Remake master bedroom as timeless, 'undecorated'

Dear Readers,

The success of a room is created by the sum of its parts: the proportions, the number and shape of windows, the quality of light and the architectural details. We suggest transforming your stark room into a comfortable, spa/hotel-like atmosphere with a few minor changes.

1. Scale, like color and texture, breathes life into a room as much as the people who enter it. Paint the ceiling "Decorators White" (flat finish). Paint the trim, crown, casing door and below wainscoting "White Dove" and above wainscoting "Brittany Blue" (this is a soft blue/gray hue)

2. Achieve your spa/hotel-like setting by creating a timeless and undecorated look. The focal point of your room is the heavy wood-paneled headboard. Decrease the height and

soften this area of the bed with an upholstered back instead. The bedspread looks very flat. By adding a duvet folded at the end of the bed and euro pillows placed in front of the headboard, the master bed will have a luxurious look and feel.

3. The furniture layout of this master bedroom locks you into certain areas for placement because of the windows, angles of walls and door placement. Remove the bench at the end of the bed and add two comfortable chairs with ottoman for relaxing by the fireplace. The hood on the fireplace is over-scaled for the room. By removing it and adding a simple surround and hearth you will achieve more character and balance to the space.

4. Eliminate the oversized chest of drawers/mirror. If drawer storage is needed you can always add built-ins

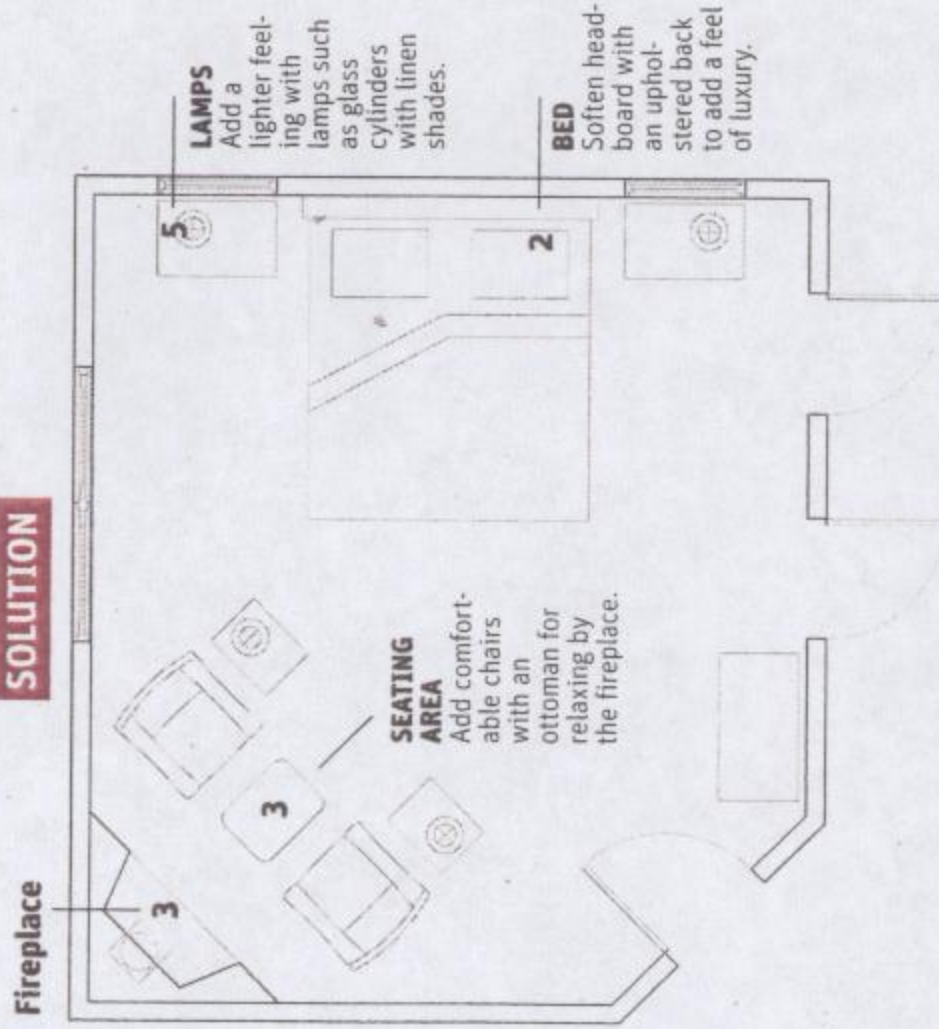
to your existing closet. Mirror placement facing a bed is never a good idea. The smaller chest of drawers can stay where it is as long as you change the swing of the door opening and your mirror can then be placed above it.

5. We would suggest the lamps on the nightstands to be lighter in feel. A glass cylinder with a linen shade will make it feel like it's floating. There is abundant light coming from the windows. Applying a linen flat roman shade top to bottom will fuse the light.

Sincerely,
Denise Antonucci
Jerry Sanfilippo

ASI Interiors Inc.
230 W. Huron
Chicago

SOLUTION



The Chiovari family
gets design advice from Denise Antonucci and Jerry Sanfilippo in **Designer's Eye**. Page 3

SUN-TIMES
CHICAGO
At Home