



## DESIGNER'S EYE

BY MAURA BRAUN

# QUIET PATTERNS

Shift perspective to create sense of movement and place for relaxation

### PROBLEM

Dear Designer's Eye, We live in downtown Chicago, and need help with our bedroom. We have a long narrow hallway that leads to our 13-by-10 bedroom. Just outside our bedroom is our terrace — it faces north, so we get a ton of light. Because the bedroom space is relatively small, we need advice on how to lay out the furniture. We also want to incorporate other colors into the bedroom that work off the two shades we currently have: cream and aqua. Please help!

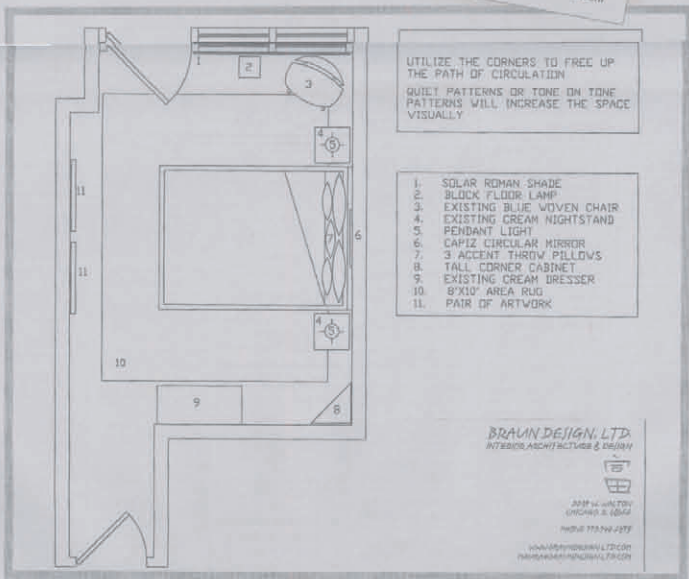
Jay L.  
Downtown Chicago



Dear Jay, My suggested plan provides efficient use of space — use your corners to open up the path of circulation. The palette of colors you have chosen is great. They combine a neutral cream with a cool or receding color, aqua. These colors alone will help to minimize the mass of space that the furniture is actually using. I think adding other colors would be too much.

Sincerely,  
Maura Braun  
Braun Design Ltd.  
[www.braundesign-ltd.com](http://www.braundesign-ltd.com)

### SOLUTION



#### 1. MOVE THE BED

I'd relocate the queen-size bed to the west wall from the south wall. The east wall provides the largest span of uninterupted wall for placing most of the furniture. In addition, this still allows for a clear path of circulation to the door leading to the terrace. Now you have room for a nightstand (4) on either side of the bed, using your one existing cream nightstand and obtaining a second one to match. Accent pillows can be placed in front of your existing bed pillows to dress up the bed.

#### 2. CREATE TRAFFIC FLOW

The corners are important to utilize to allow for an easy flow of traffic. In the northwest corner, I've placed your existing blue woven chair (3) with the "block floor lamp" (2) next to it. At the windows along the north wall, I would suggest "Solar Roman Shades — opaque" (1) available through Smith & Noble in the Verbená Sand No. 4693 or Champagne No. 3889. Do order a sample first to check for privacy and color.

#### 3. ADD A STORAGE CABINET

Again, focusing on the corners. I suggest a tall corner cabinet (8) for storage in the southeast corner to maximize storage and floor space. *Amzren.com* sells a single storage corner cabinet in light oak with shelving space. Place your artwork (11) on the west wall, so you now enjoy it from the chair or bed. If you're up for painting, Benjamin Moore's Caribbean mist No. 2061-70 will provide an off-white tinted blue that will work well with your cream and aqua.

### Send us your design challenges

Feeling design challenged? The Sun-Times and the Merchandise Mart can help!

- Provide some background on your living situation (25 words or less), the problem with your space and your vision of how you'd like that room to be used and how you'd like it to feel.
- Send four to six color photos, digital preferred.

- Include views of all sides of the room, including the floor, ceiling and four walls.
- Send us the overall measurements of the room.
- Name the room — is it your master bedroom, guest room, media room? E-mail to [HomeLife@suntimes.com](mailto:HomeLife@suntimes.com), Designers Eye in the subject line. Include your name and a phone number where you can be contacted.

### READY, SET, GO!

Send your quick-fix rooms for consideration by snail mail to Designer's Eye:

At Home c/o Laura Castro  
Chicago Sun-Times  
350 N. Orleans  
Chicago 60654

or e-mail [HomeLife@suntimes.com](mailto:HomeLife@suntimes.com)  
—Sally Duros, Real Estate editor



# 1.4.08