



DESIGNER'S EYE

BY FERN ALLISON

FLEXIBLE FAMILY PLAN

Two walls, six people, a large screen TV and not enough seating

PROBLEM



Dear Designer's Eye,
I am having the hardest time with my living-room arrangement. We are a family of six, and love to watch TV together. The problem is we cannot all view our 47-inch plasma TV together; it's mounted on our wall. I am planning to purchase new living-room furniture — but what do I buy? And how should I arrange it so we all can enjoy our new TV? Our living room is 18-by-16. Please help!

Maria R. Leon

SOLUTION

1. TV REPLACEMENT

With the right window treatments, you can put the television on the wall opposite the windows. Keep your current window treatments and add SheerWeave shades. These shades block 97 percent of the UV rays and glare, but let the light in. When not in use, they can be rolled up hidden behind your current window treatments. You'll be able to enjoy both the television and the sunlight.

Dear Maria,
I understand your frustration in setting up your TV room, especially when two walls were automatically eliminated for positioning the television. What I have done is give you a flexible floor plan that seats six easily and up to nine when you have company.

Have fun,
Fern Allison

2. USE A LONG SOFA THAT CAN SEAT THREE

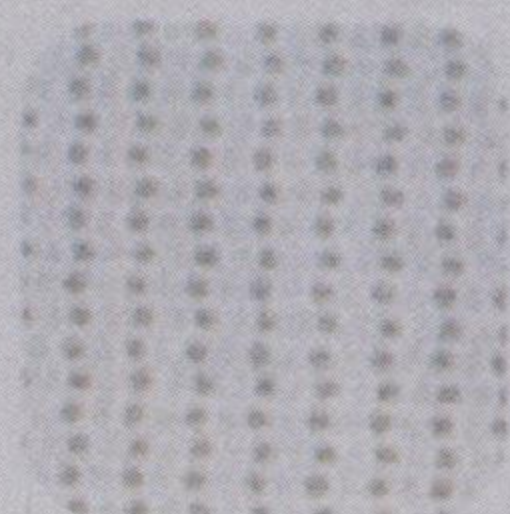
I have placed in the space an 86-inch sofa that can seat three. Instead of a coffee table we have three lower-height tables bunched together. These tables can also be moved around. Another option is three ottomans with reversible tops. The tops lift up and can be turned over to be a tray or upholstered cushion.

3. ELIMINATE BOXY FEELING BY USING THREE CHAIRS

Add three chairs instead of another sofa or loveseat to the room. This eliminates that boxy feeling that can be created by too many large pieces. An ottoman in front of two chairs allows the viewer to stretch his or her legs out. Or you put a tray on top of the ottoman and use it as a coffee table. To make the room more interesting, two chairs should be the same and the third should be different. Please do not make them all the same fabric and color. Do not match your carpet color.

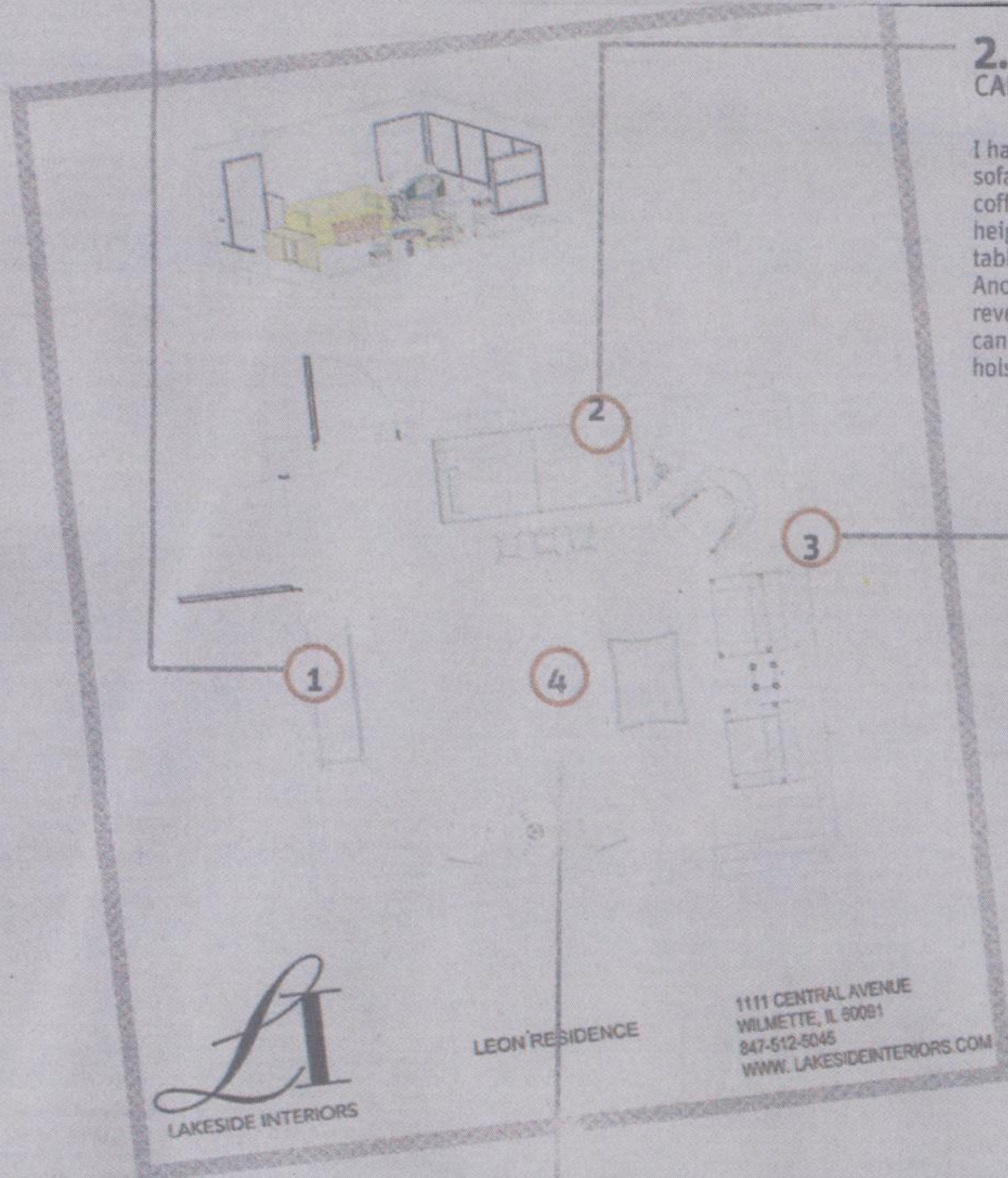
4. ADDITIONAL SEATING

A table and two chairs, dining-room style, on the wall opposite the sofa are great for additional company. The fabric on these chairs can be the same as the individual chair in the previous grouping.



< SHEERWEAVE SHADES

These shades block 97 percent of the UV rays and glare, but let the light in.



SUN-TIMES OFFICIAL CRAIG

12.14.07